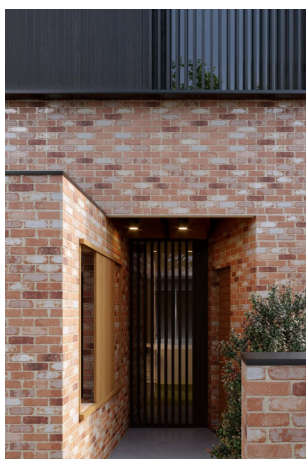
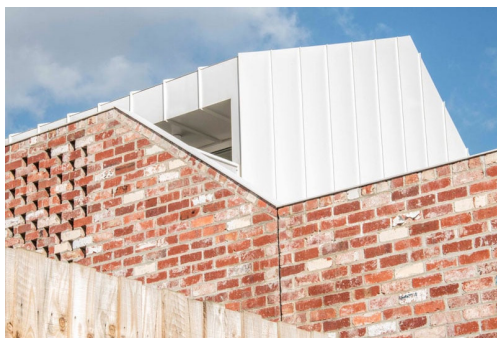
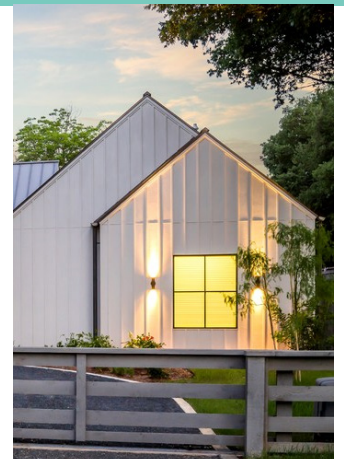


Hesperia is the northern most residential precinct in the Ellenbrook Town Centre and has been given the original name proposed for Perth by Governor James Stirling. It denotes a "land looking west" towards the setting sun in whose night sky Hesperus, the evening star, often hung low and brilliant.

At the time of colonization Britain was in the midst of an industrial revolution. Advances in technology brought with it a new type of vernacular factory building for mass producing new building products such as iron and other alloys, machinery, sheet glass, cement and mass produced goods for consumers. The built form character in Hesperia will pay homage to the industrial style of this time which incorporated practical and honest materials such as brick, timber, iron and tin (now replaced by steel and aluminum) and the introduction of cement, now the basis for concrete.

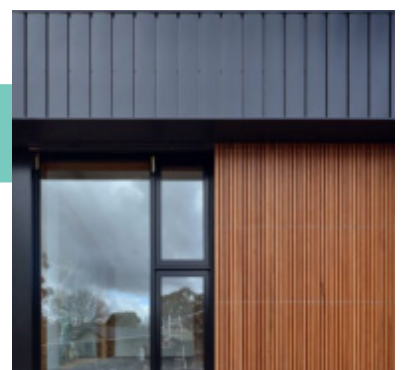
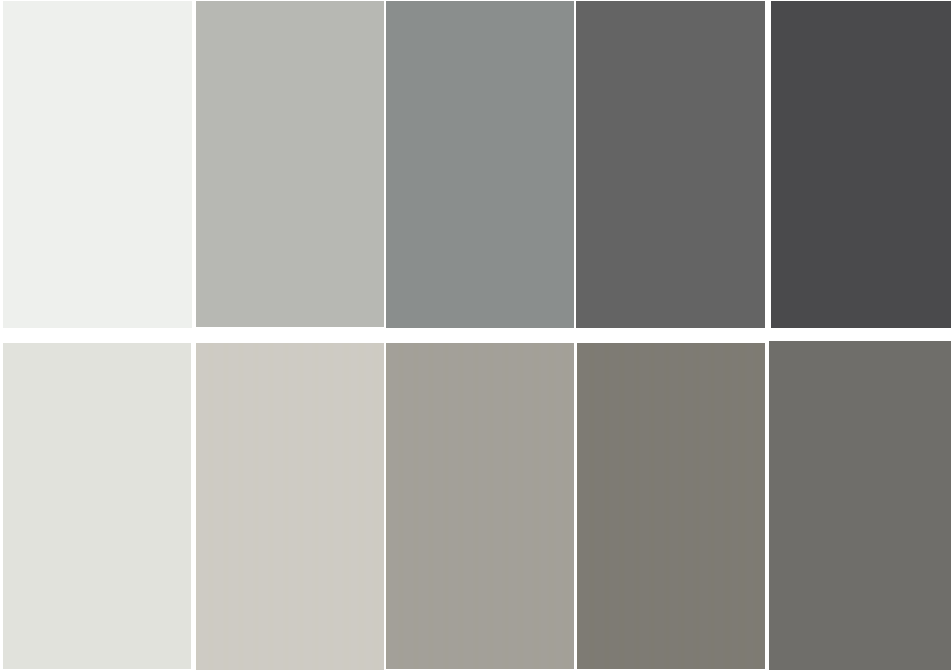
In addition to the industrial vernacular, Hesperia also has an association with starlight and it is intended that the incorporation of lightweight materials such as timber battens, weatherboard, sealed metal cladding and products which produce texture, shadows and dappled light will soften heavier materials such as concrete and brick.

Other elements such as vertically proportioned windows, over height glazing & doors, high ceilings, columns, vertical wall cladding or other vertical elements will further enhance the theme.



Paint Colours

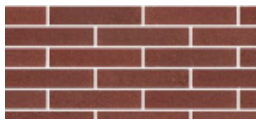
Materials & Profiles



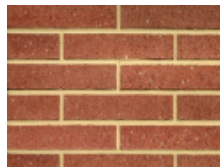
Face Bricks



MIDLAND BRICK—HELENA VALE



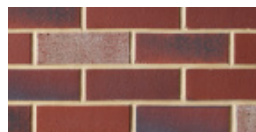
AUSTRAL—CAPITOL RED



BRIKMAKERS—NEW YORK



AUSTRAL—SAN SELMO



BRIKMAKERS—VINTAGE RED



AUSTRAL—GERTRUDIS



MIDLAND BRICK—SANDALFORD



BRIKMAKERS—BLUE TAPESTRY



AUSTRAL—GUILDFORD



MIDLAND BRICK HERITAGE RED

Roof Colours

